

FX302 Installation Instructions for the Club Car Regen 1



Before Installation:

- Place rear on jack stands (wheels off the ground)
- Use proper eye protection and tools when working with electrical equipment
- Disconnect the batteries



Installation:

1. Mount the control (Extra hardware may be required).
2. Connect all motor wires (refer to supplied wiring diagram for proper connection).
3. Install the supplied adapter harness.



Troubleshooting:

Perform all troubleshooting checks with rear wheels off the ground.

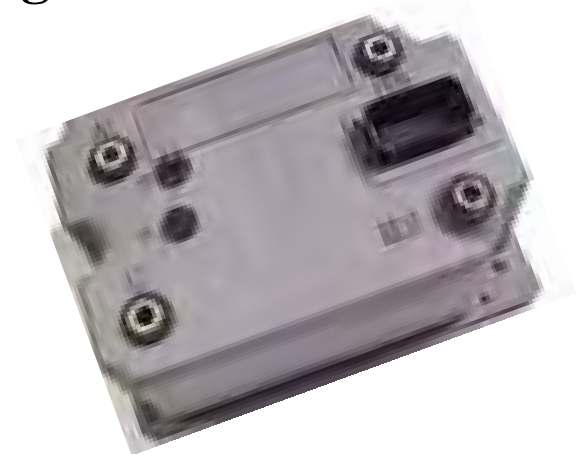
Cart does not operate

- Verify that all wire connections are correct and secure.
- Verify that the Tow switch is in the run position. This can be done by measuring pin 1 on the control. If switch is closed this pin should measure close to battery volts.
- Verify battery volts on pin 2 of the control.
- Verify approximately 30 volts on pin 6 of the control with the key on.

- Verify approximately battery volts on pin 11 of the control.
- Verify zero volts on pin 3 of the control with no throttle.
- Verify battery volts on pin 3 of the control at full throttle.
- Verify battery volts on pin 4 and zero volts on pin 5 of the control when the forward direction is selected.
- Verify battery volts on pin 5 and zero volts on pin 4 of the control when the reverse direction is selected.
- Verify that control is configured for the correct application (check label).

Contactor closes but no movement

- Verify proper armature and field connections (Refer to supplied wiring diagram).
- Verify approximately 3.5V to 0.5V on pin 7 of the control as the accelerator is slowly depressed.
- For software revisions FXL0 thru FXL4 (software revision can be found on controller label) verify zero volts on pin 13 of the controller.



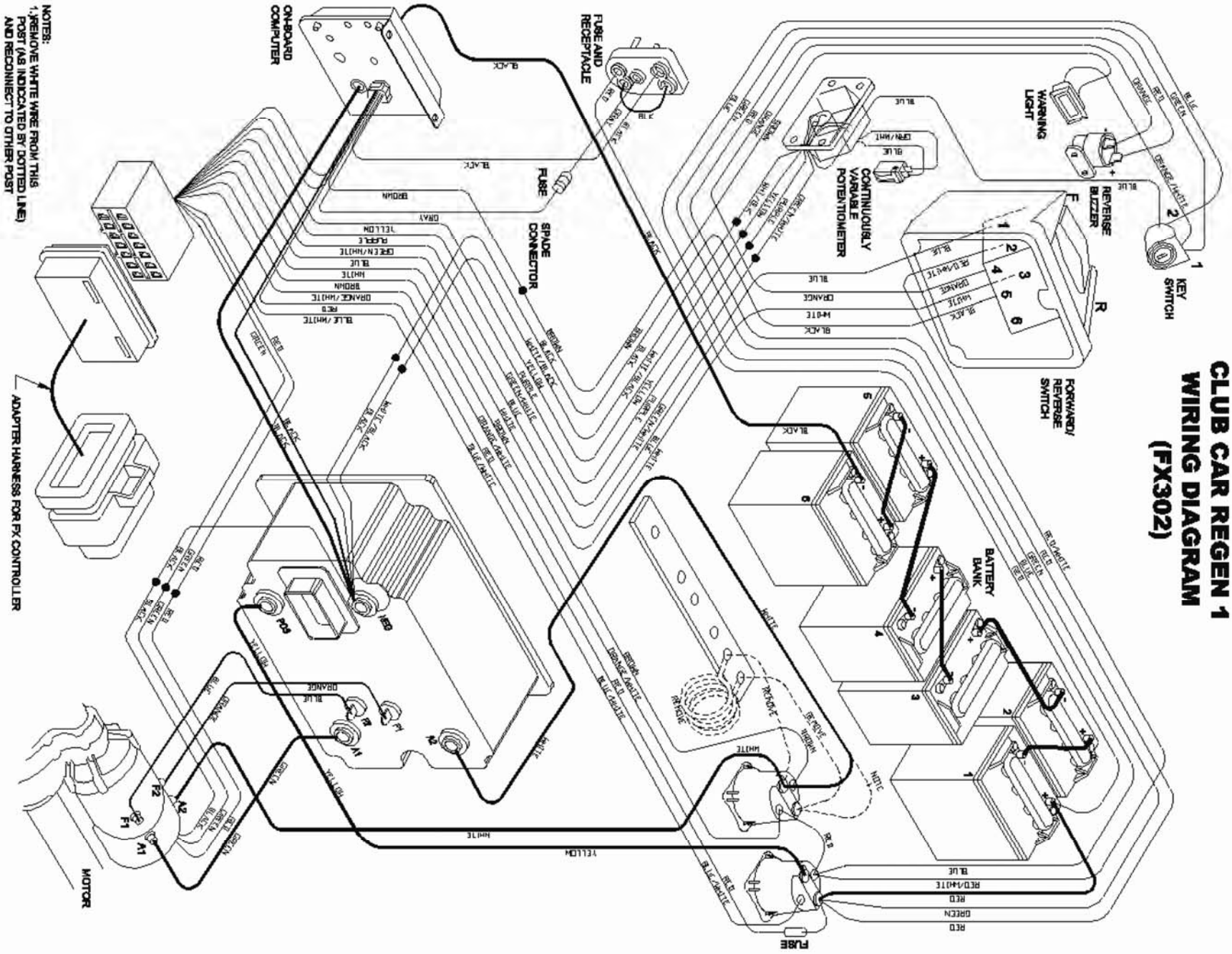
Disclaimer:

Flight Systems Industrial Products is not responsible for personal injury or equipment damage due to misuse of the product.



1015 Harrisburg Pike
Carlisle, PA 17013
Phone: (717) 254-3747
Fax: (717) 254-3777
Website: www.fsip.biz

CLUB CAR REGEN 1 WIRING DIAGRAM (FX302)



NOTES:
1. REMOVE WHITE WIRE FROM THIS PORT (AS INDICATED BY DOTTED LINE) AND RECONNECT TO OTHER POST

ADAPTER HARNESS FOR FX CONTROLLER