

FX302 Installation Instructions for the Club Car Regen2



Before Installation:

- Place rear on jack stands (wheels off the ground)
- Use proper eye protection and tools when working with electrical equipment
- Disconnect the batteries



Installation:

1. Mount the control.
2. Connect all motor wires (refer to supplied wiring diagram for proper connection).
3. Connect the 23 pin connector to the new control.
4. Disconnect the On Board Computer plug and install the adapter harness.
5. Plug in charger for 30 seconds.



Troubleshooting:

Perform all troubleshooting checks with rear wheels off the ground.

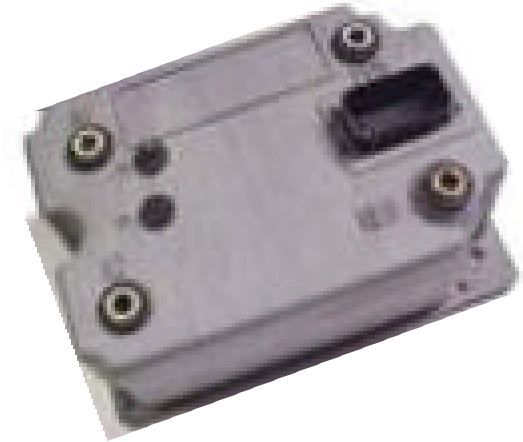
Cart does not operate

- Verify that all wire connections are correct and secure.
- Verify that the Tow switch is in the run position. This can be done by measuring pin 1 on the control. If switch is closed this pin should measure close to battery volts.
- Verify battery volts on pin 2 of the control.

- Verify approximately 30 volts on pin 6 of the control with the key on.
- Verify approximately battery volts on pin 11 of the control.
- Verify zero volts on pin 3 of the control with no throttle.
- Verify battery volts on pin 3 of the control at full throttle.
- Verify battery volts on pin 4 and zero volts on pin 5 of the control when the forward direction is selected.
- Verify battery volts on pin 5 and zero volts on pin 5 of the control when the reverse direction is selected.
- Verify that control is configured for the correct application (check label).
- If the vehicle has been stored for three days without charging, plug charger in for 30 seconds.

Contactors closes but no movement

- Verify proper armature and field connections (Refer to supplied wiring diagram).
- Verify approximately 3.5V to 0.5V on pin 7 of the control as the accelerator is slowly depressed.



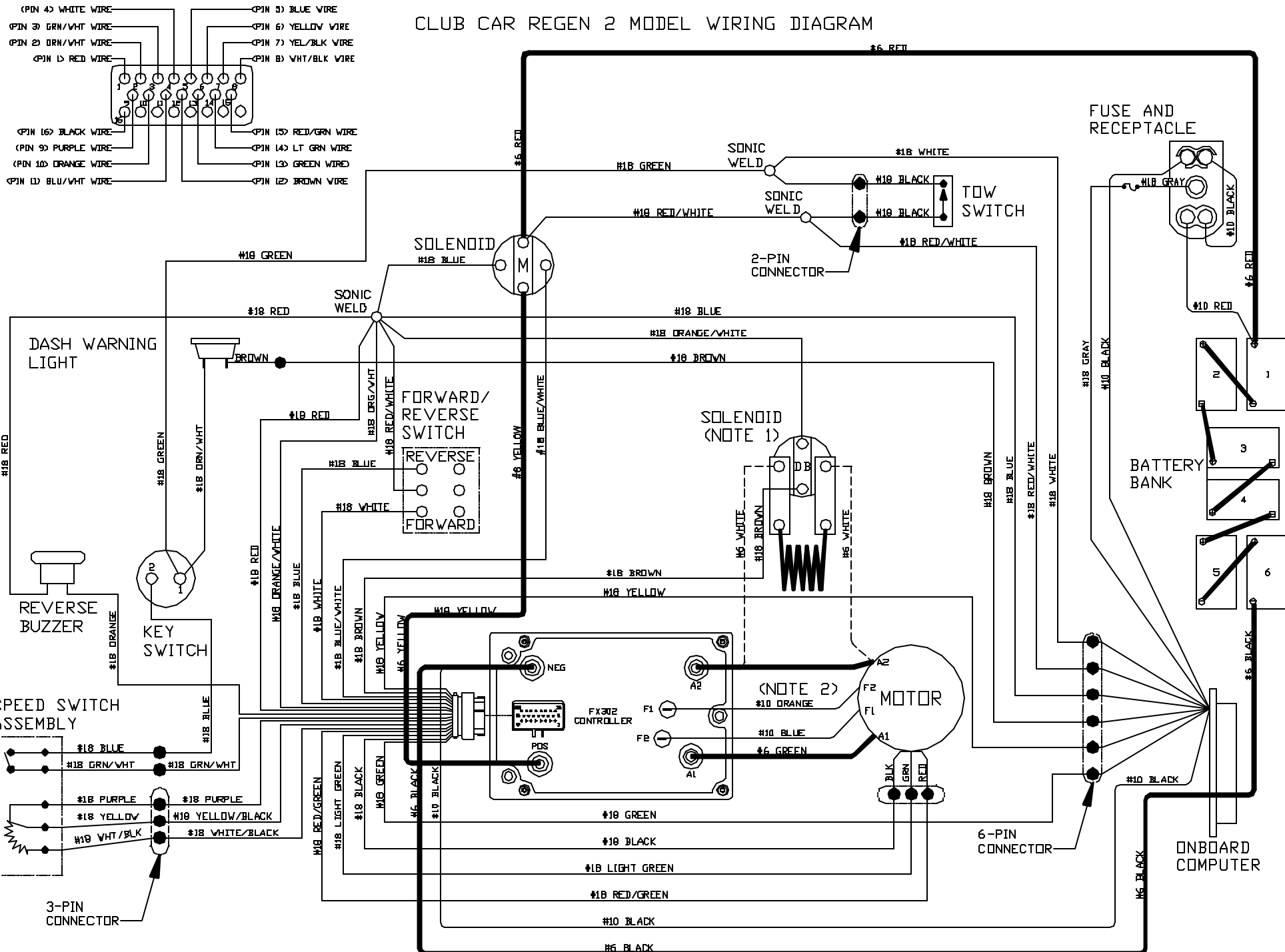
Disclaimer:

Flight Systems Industrial Products is not responsible for personal injury or equipment damage due to misuse of the product.



1015 Harrisburg Pike
Carlisle, PA 17013
Phone: (717) 254-3747
Fax: (717) 254-3777
Website: www.fsip.biz

CLUB CAR REGEN 2 MODEL WIRING DIAGRAM



NOTE:
 1) IF EQUIPPED WITH DYNAMIC BRAKING SOLENOID, REMOVE BOTH #6 WHITE WIRES. USING ONE OF THE WHITE WIRES, CONNECT A2 OF THE CONTROL TO A2 OF THE MOTOR. DISCARD THE OTHER WHITE WIRE (AS SHOWN BY THE DOTTED LINE).
 2) CONNECT F1 OF THE MOTOR TO F2 OF THE CONTROL AND F2 OF THE MOTOR TO F1 OF THE CONTROL.